



1640 Sepulveda

Los Angeles, CA

ShubinDonaldson has taken a 1980's five-story office building at the corner of Santa Monica and Sepulveda Boulevards and transformed it into a contemporary "boutique" commercial space



LOCATION:
Los Angeles, CA

TAGS:

COMMERCIAL

OFFICE

TRANSFORMATION

WORKPLACE

Shubin Donaldson

The building is clad in GFRC (glass fiber reinforced concrete) and stretches an entire block along Sepulveda with terraced decks at the site's north end. Prior to the remodel, the endless surface of concrete and tinted ribbon windows suggested a sense of severity and the outdated thirty-year old palette of materials and finishes in the main lobby both need reviving.

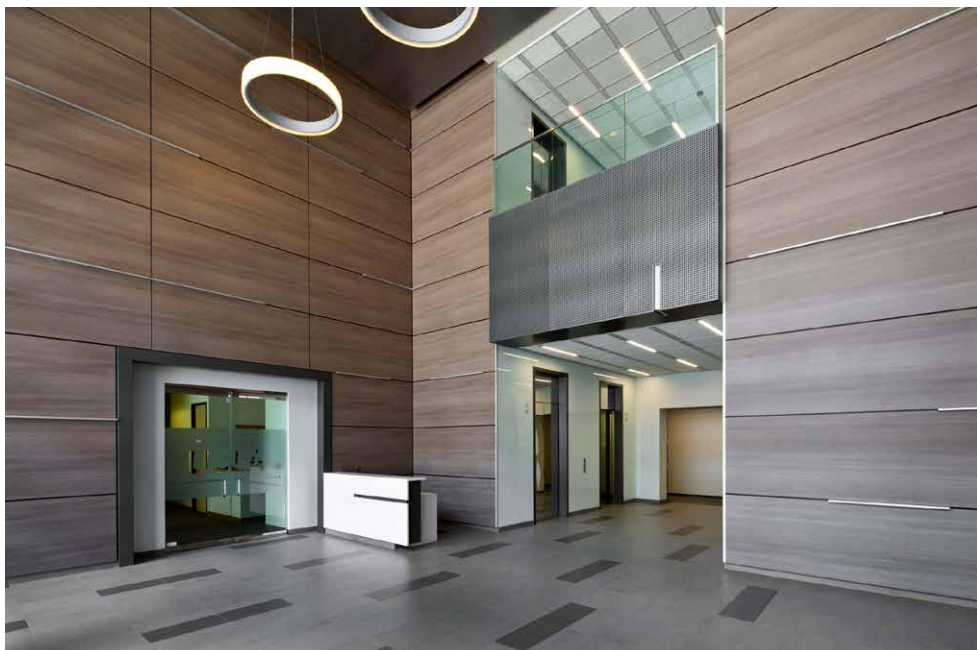
Budgetary constraints meant a solution had to be affordable yet still cover 150K sq. feet of building area, a main entry lobby and four outdoor patios. In the garage tones of gray with anodized aluminum were applied to the concrete panels.

Stripes of color modernized this once tired and static structure in to a visual display of movement and complexity. Through the careful application of Resysta (wood cladding) and creative drought tolerant landscaping, the patio area has been transformed into a warm and inviting event space.

In the main lobby, faded wall panels are covered with a vinyl wood finish laminate as a remedy to costly wood replacement. The elevator lobby walls and interior cabs are clad in white back-painted glass for a sleek yet timeless presence. Ceiling panels of white expanded metal allow glimpses of the floor structure above, typically desired in creative office space.

With its open design and sleek outdoor spaces this creative work-space is perfect for "bringing your dog to work" while its niches of quiet comfort infers a mindfulness of the "work-life balance" so many companies strive to achieve.

A vertical "billboard" of thin Resysta slats fastened to a 70-foot high steel frame delineates the parking entrance which also serves as the building's main signage as well as an eye-catching gesture amongst the densely populated streetscape.



Shubin Donaldson



Project Information

PARTNERS IN CHARGE:
Russell Shubin, AIA, LEED AP
Robin Donaldson, AIA

PRINCIPAL IN CHARGE:
Mark Hershman

PROJECT ARCHITECT:
Tom Johnson, AIA, LEED AP
Bram Janaitis

PROJECT TEAM:
Jay Fukuzawa
Stuart Lord, AIA
Gabriela Colmenares