



Pico Bowl

Santa Monica, CA

A preservation and reinterpretation of a 24,000 SF, 1960's California modernist structure.



LOCATION:
Santa Monica, CA

SIZE:
24,000 sf

TAGS:

ADAPTIVE REUSE

COMMERCIAL

HOSPITALITY

MIXED-USE

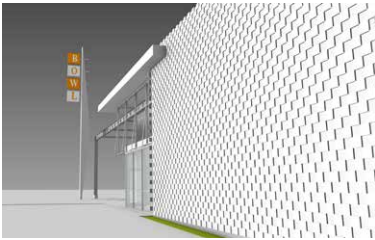
RETAIL

TRANSFORMATION

UNBUILT

ShubinDonaldson

The original concept bowling alley was used as a means of recapturing the nostalgia of the original design intentions while allowing new digitally fabricated operations to be performed within. Through the precise insertion of CNC milled metal panel screens (deriving meaning from the original decorative block facade), patterned glazing elements, and laminated wood features, the formal character of the building has been perceptually altered. Within the conceptual boundaries of the prior design, the newly converted office and retail space is respectful of a historical icon while presenting a contemporized and much more porous pedestrian appeal.



Project Information

PARTNERS IN CHARGE:
Russell Shubin, AIA, LEED AP
Robin Donaldson, AIA

PROJECT TEAM:
Jay Fukuzawa