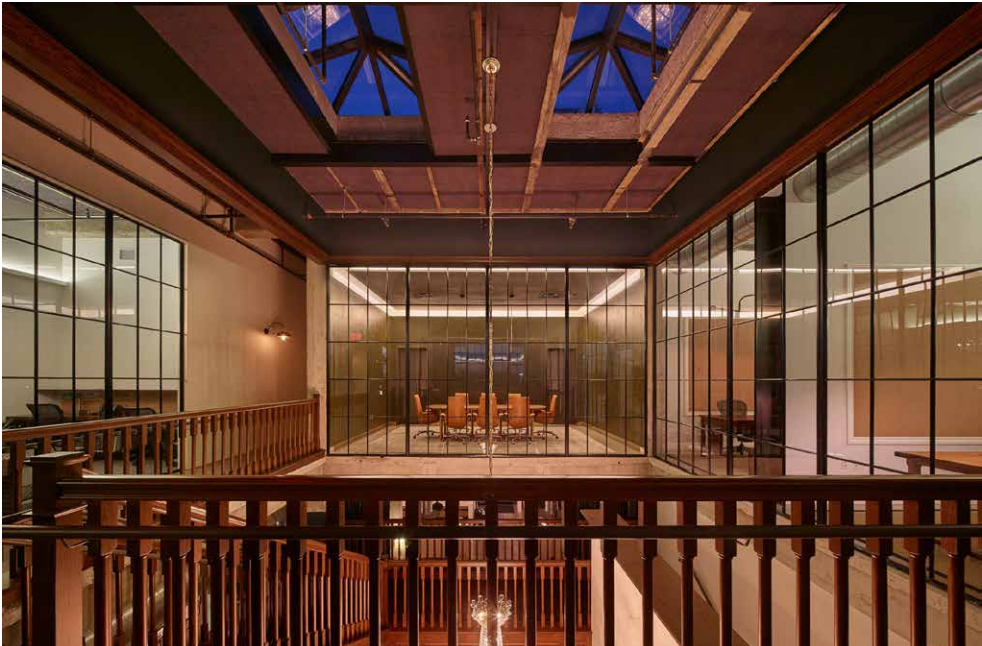


Smuggler

Hollywood, CA

The design objective was to retain as much of the charm and character as possible while augmenting the space for the headquarters of an established creative company.



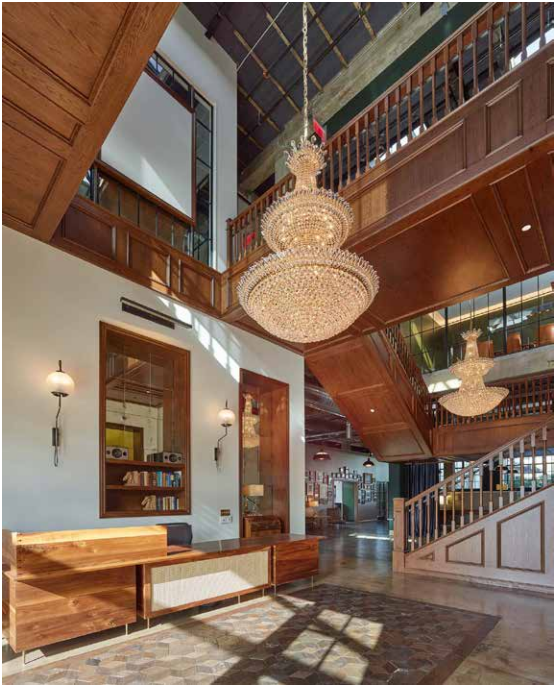
LOCATION:
Hollywood, CA

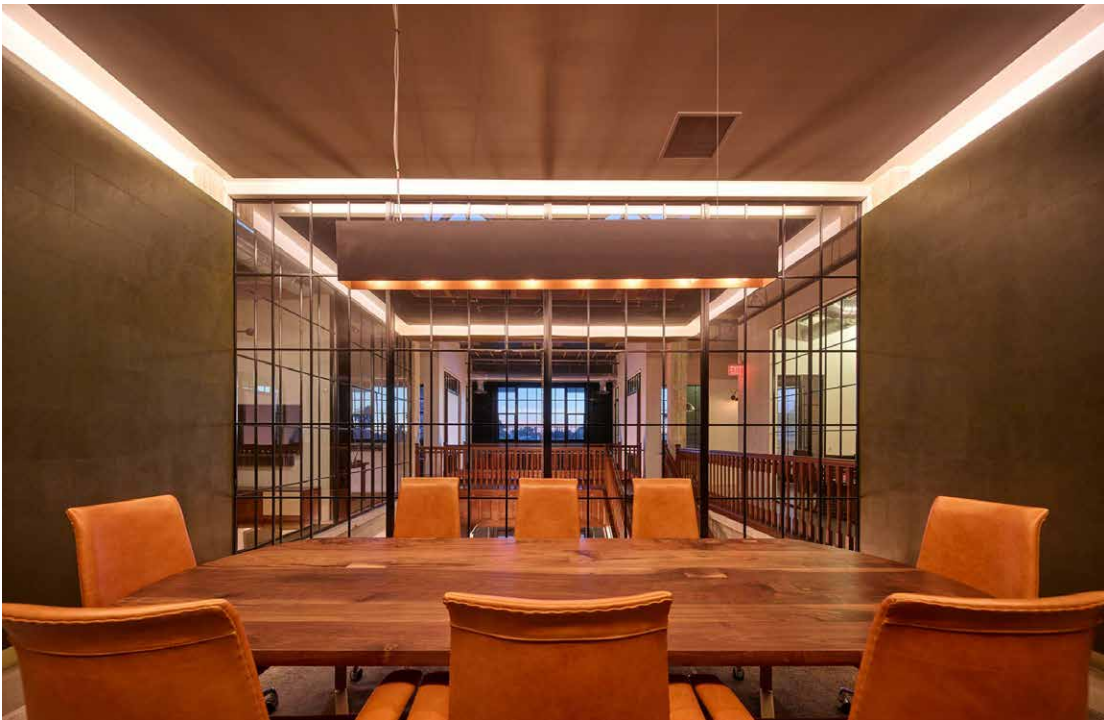
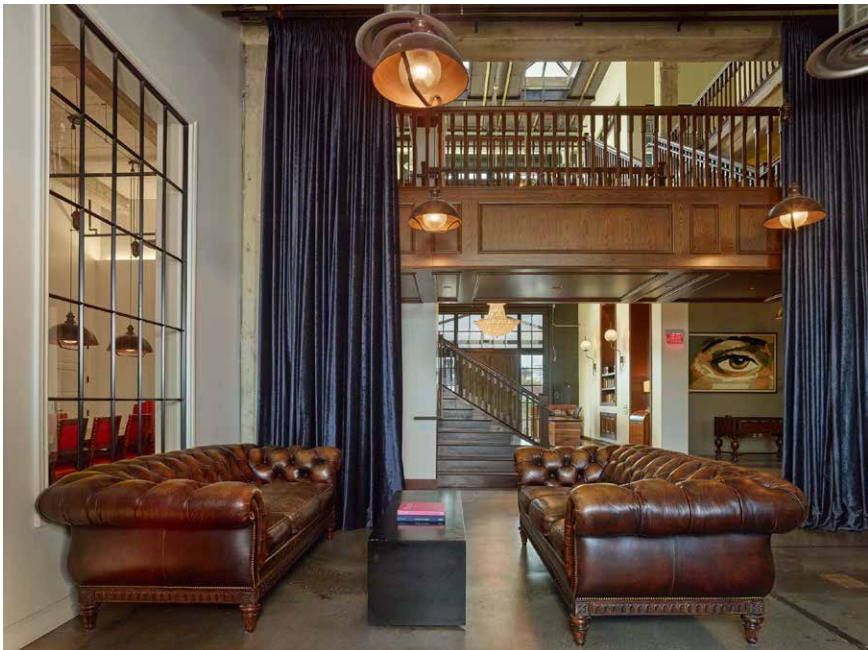
TAGS:

- ADAPTIVE REUSE
- INDOOR-OUTDOOR
- WOOD
- WORKPLACE

Shubin Donaldson

Located in the heart of Hollywood, Smuggler is an adaptive reuse of a 14,000 SF two-story concrete building on the west side of Seward Street between Willoughby and Waring Avenues. The building was originally constructed in 1927 and the design objective was to retain as much of the charm and character as possible while augmenting the space for the headquarters of an established creative company.





Project Information

PARTNERS IN CHARGE:
Russell Shubin, AIA, LEED AP
Robin Donaldson, AIA

PRINCIPALS IN CHARGE:
Mark Hershman