

## Riviera

Santa Barbara, CA

Situated on a ridge in Santa Barbara site known as “The Riviera,” the residence commands a 270-degree view of the Pacific Ocean, a dramatic canyon, and the Santa Ynez mountains.



LOCATION:  
Santa Barbara, CA

TAGS:

CALIFORNIA LIFESTYLE

INDOOR-OUTDOOR

INSPIRATIONAL VIEWS

MODERN RESIDENCE

POOL

REMODEL

STONE

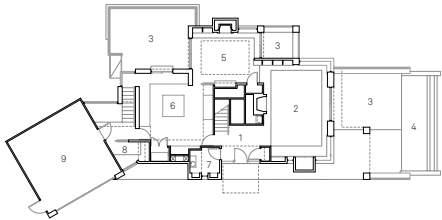
# Shubin Donaldson

Situated on a ridge in Santa Barbara site known as "The Riviera," the residence commands a 270-degree view of the Pacific Ocean, a dramatic canyon, and the Santa Ynez mountains. Starting with the siting the house, a sustainable design strategy was conceived and implemented in which passive solar gains are realized based on its orientation.



The original house was taken apart, piece-by-piece, with all reusable elements donated. Building on the original foundation and caissons, a passive roof-top solar heating system provides for domestic hot water; a passive solar ground-level hot-water system is used to heat the pool. Photovoltaic power generates household electricity through a 2.8kw system; when power is not needed, it feeds back into the grid. Radiant hot-water floor heating and central air conditioning in the ceilings systems are in place but rarely used because of the solar orientation of the home and the natural ventilation. Additional energy-saving systems include double-pane windows, UV-resistant glass, ample insulation, and energy-efficient appliances. Deep exterior overhangs are designed to provide shade in the summer, and let in sun during the winter.





# Shubin Donaldson

This relatively small house has all of the elements of a 5,000- or 6,000-square-foot house in a tidy, 3,200-square-foot package. The three-level home and two-car garage include open living/dining area, kitchen, master bedroom and bath, guest bedroom and bath, home gym, powder room, two home offices with office bath, outdoor dining area, outdoor lounge areas, lap pool, and 1,400 square feet of lower-level storage.



## Project Information

**PARTNERS IN CHARGE:**  
Robin Donaldson, AIA

**PROJECT TEAM:**  
Alan McLeod

**CONTRACTOR:**  
Quillin Construction

**PHOTOGRAPHER:**  
Ciro Coelho