



Tramonto

Pacific Palisades, CA

Diffusion of the built form into the landscape defines the approach for situating this 17,000 square foot single family residence (14,500 sqft main house and 2,500 sqft accessory building) on a coastal bluff overlooking a natural canyon and the Pacific Ocean.



LOCATION:
Pacific Palisades, CA

SIZE:
17,000 sf

SUSTAINABILITY:
LEED Gold

AWARDS:
2011-12 Bronze A Design

TAGS:

ARCHITECTURAL ESTATE

CUSTOM FABRICATION

INDOOR-OUTDOOR

INSPIRATIONAL VIEWS

POOL

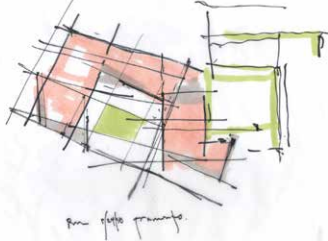
UNDER CONSTRUCTION

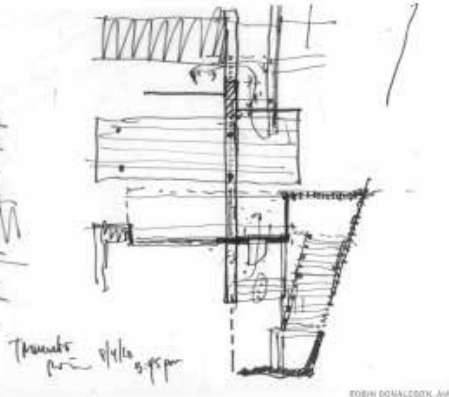
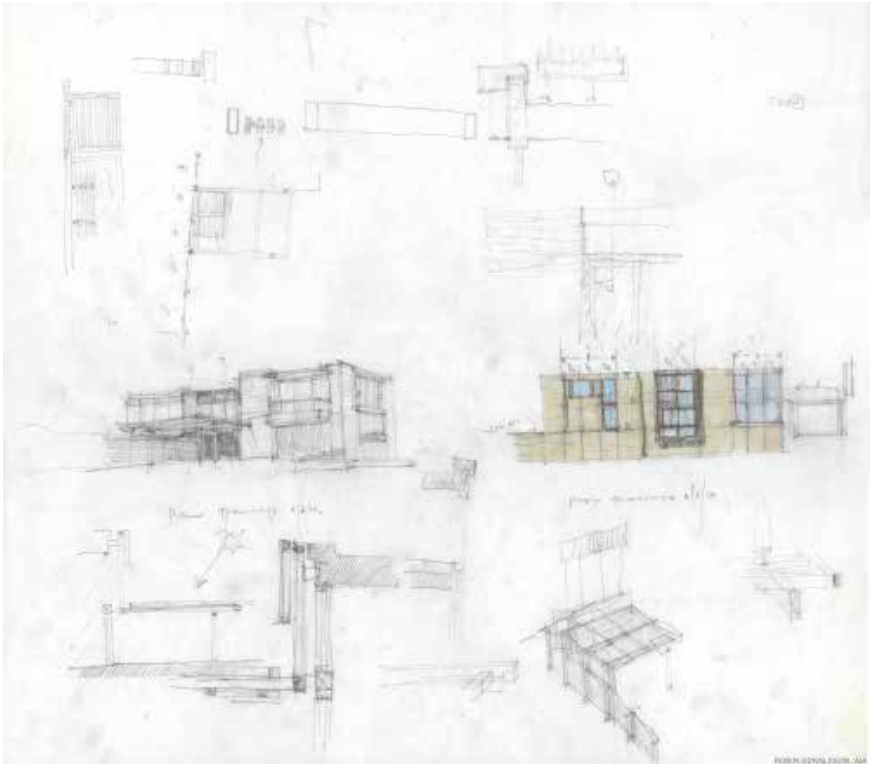
Shubin Donaldson

A balance between the negotiation and mitigation of a severe topography, integration into a diverse built context, and an attempt to preserve the natural beauty of a virgin site bordered by State park land was sought to inform the building's siting/orientation and formal/material expression. The building's design is organized by the relationship of two terrace spaces, three site defined axial geometries, and the desire for the building masses to respond to and merge with the descending hillside topography.



ROBIN DONALDSON, AIA





ShubinDonaldson

Project Information

PARTNERS IN CHARGE:
Russell Shubin, AIA, LEED AP
Robin Donaldson, AIA

PROJECT ARCHITECT:
Bradford Kelley

CONTRACTOR:
Winters+Schram Associates

