

2101 El Segundo

El Segundo, CA

Modern office renovation and repositioning.



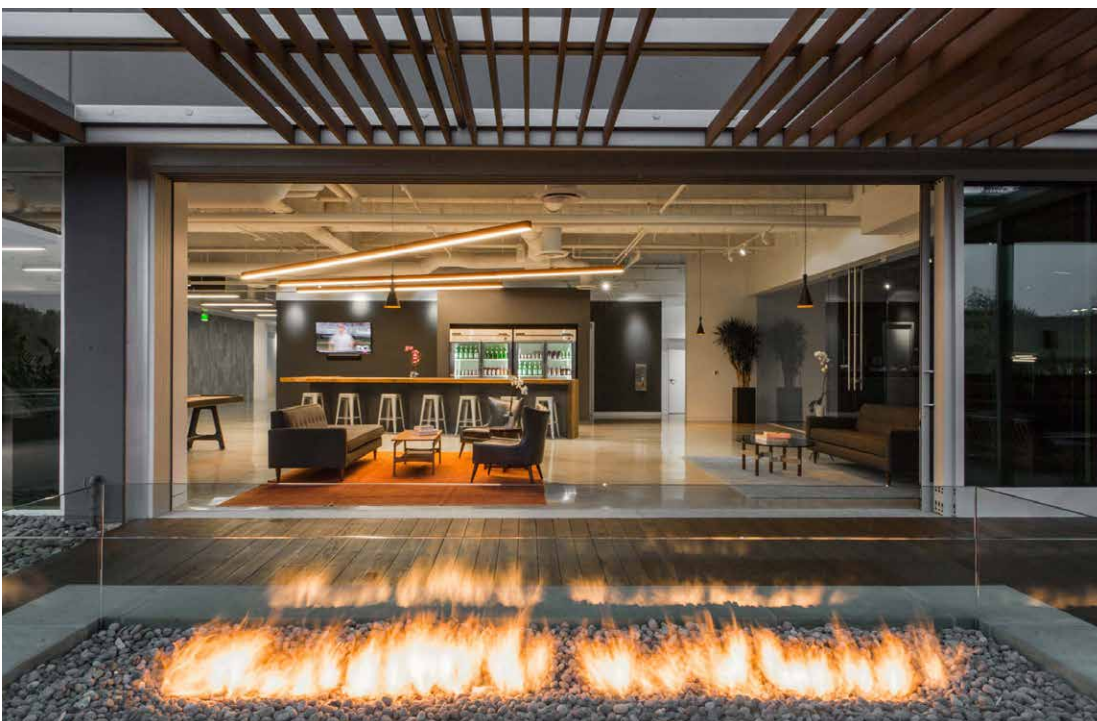
LOCATION:
El Segundo, CA

- TAGS:
- OFFICE
 - REPOSITIONING
 - SOCIAL & MEETING PLACE
 - TRANSFORMATION
 - WORKPLACE

ShubinDonaldson

The revisioning of this five story commercial office building began with an assessment of its basic stratified geometry and how the articulation of the simple bands of fenestration could mimic the analog patterning of data such as Morse code drawing reference from the digital intelligence, electronic surveillance, and defense technology efforts that formerly inhabited the originally commissioned building.

The neutrality of the newly painted exterior walls allows the particularity of the conceptually influenced window features to read more prominently and focus attention to the softened, more inviting, base conditions which include sustainably sourced areas of decking, shaded seating, and planted trellis-work. The supporting material gestures moving down the facades project through a newly designed open entry lobby. The result is a statement of reclamation from urban atrophy and movement towards re-purposed significance.



Project Information

PARTNERS IN CHARGE:
Russell Shubin, AIA, LEED AP
Robin Donaldson, AIA

PRINCIPALS IN CHARGE:
Mark Hershman

PROJECT ARCHITECT:
Sieglinde Pukke, AIA, LEED AP

PROJECT TEAM:
Jay Fukuzawa
Liz Hughes
Matt Kuser
Courtlandt Gross