



G/Fore

Beverly Hills, CA

ShubinDonaldson Architects designed a small 3,000 sf interior TI for G/Fore, a golf club company located in Beverly Hills



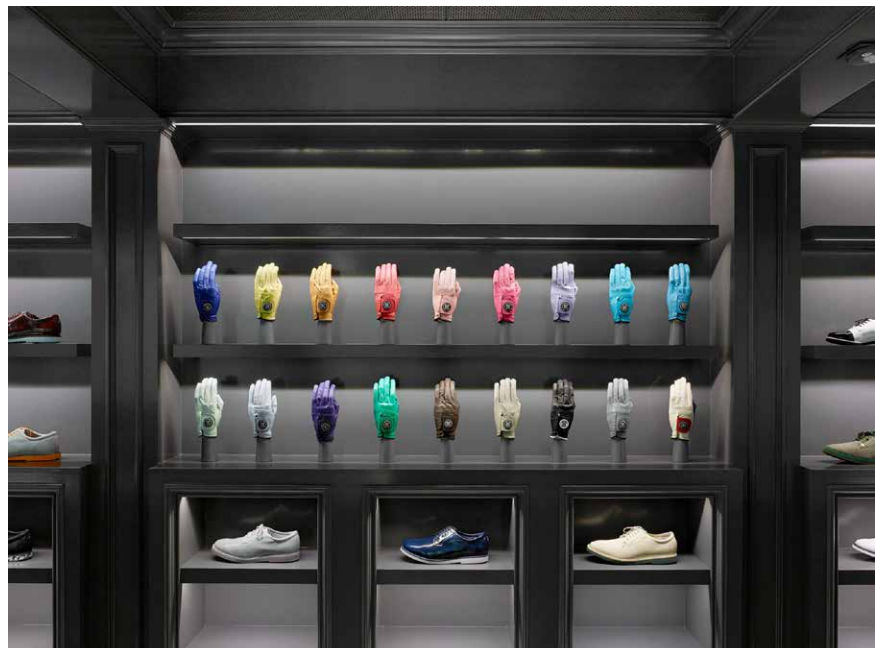
LOCATION:
Beverly Hills, CA

TAGS:

- BRANDED ENVIRONMENT
- CUSTOM FABRICATION
- RETAIL
- WORKPLACE

Shubin Donaldson

The idea behind the design is to play off the contrast between traditional and modern spaces through having a wood paneled arcade run down the center of the space. The arcade is for the display of the G/Fore's brightly colored gloves and is painted dark gray, which creates a sharp contrast with the rest of the bright white arcade.



ShubinDonaldson

Project Information

PARTNERS IN CHARGE:
Russell Shubin, AIA, LEED AP

PRINCIPALS IN CHARGE:
Mark Hershman

PHOTOGRAPHER:
Benny Chan

