

JANUARY/FEBRUARY 2007

LA

# ARCHITECT

WATER

A PUBLICATION OF BALCONY MEDIA, INC.

THE MAGAZINE OF DESIGN IN SOUTHERN CALIFORNIA



U.S. \$5.95 / CANADA \$7.95



# United States Courthouse

LOCATION: Fresno, California

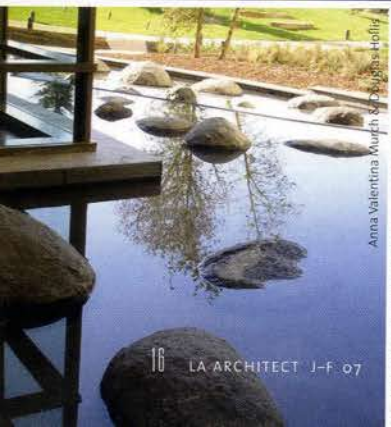
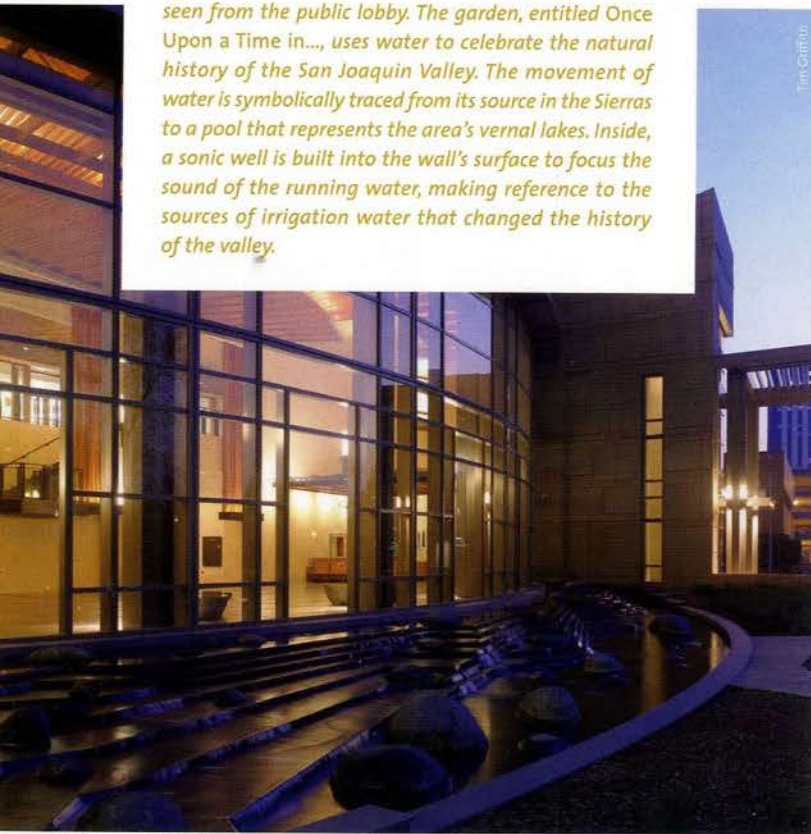
DESIGNER: Gruen Associates with Moore Ruble Yudell Architects & Planners

WEBSITE: [www.gruenassociates.com](http://www.gruenassociates.com)  
[www.moorerubleyudell.com](http://www.moorerubleyudell.com)

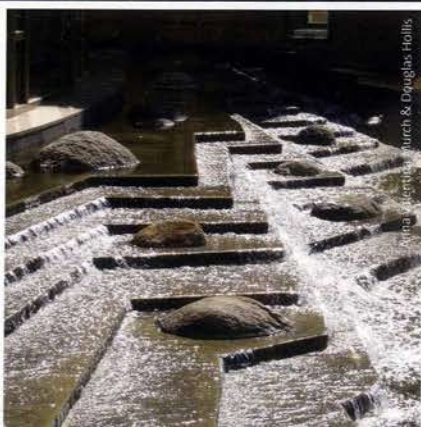
*The recently completed U.S. Courthouse both adds a new landmark to downtown Fresno and enhances the cultural environment of the city. A major public garden, large multi-use lobby, café, library and other amenities make the courthouse an integral part of the region's urban and community life. The context of the greater Central Valley and the nearby Sierra Nevada Mountains are reflected in the sculpting of the mass of the building and the use of textured precast-concrete panels.*

*Embracing landscape qualities as varied as the region's mountain streams, oak-dotted foothills and sweeping agricultural plains, the site design is all about place. The L-shape of the building frames a large public garden—a collaboration between the project's artists and landscape architect—as a tableau to be seen from the public lobby. The garden, entitled Once Upon a Time in..., uses water to celebrate the natural history of the San Joaquin Valley. The movement of water is symbolically traced from its source in the Sierras to a pool that represents the area's vernal lakes. Inside, a sonic well is built into the wall's surface to focus the sound of the running water, making reference to the sources of irrigation water that changed the history of the valley.*

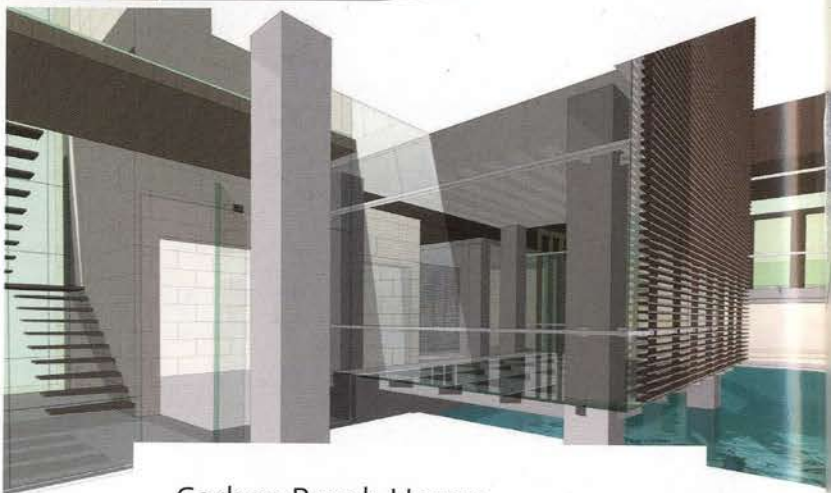
Tim Griffin



Anna Valentina Murch & Douglas Hollis



Anna Valentina Murch & Douglas Hollis



# Carbon Beach House

LOCATION: Malibu, California

DESIGNER: Shubin + Donaldson Architects

WEBSITE: [www.shubinanddonaldson.com](http://www.shubinanddonaldson.com)

*The design program for this ocean-front residence was conceived around the idea of an urban-spa retreat. With the noisy highway as a dominant feature of the locale, the building is oriented as an enclave to open up to the ocean and turn its back on the distracting elements outside. Conceptually, the house is divided into four hut-like structures, giving the building a sense of a spa village within enclosed walls.*

*Priority was placed on bringing air, light and water into each of the hut spaces. A ground-level pool transects the internal living spaces on the west end of the building. One hut has been situated on stilts over the pool and features a glass floor, drawing more light into the rear areas of the building. Interstitial spaces between the huts provide circulation for movement. Glass skin wraps around each hut and is broken up only between facing interior spaces. Attention was given to modulate and temper solar gain and allow for easy adjustment of air flow. In addition to the concrete floor's radiant heating system, fixed external wood-slat screens and operable windows help minimize energy usage. A stone wall on the street side acts as one more enclosure and helps screen traffic sounds.*